

Product Range

2019



PROUD MEMBER OF:



The entire Carron Range at your finger tips

High-end freestanding. Cutting edge, minimalist design. Traditional themes. When it comes to choice, Carron Bathrooms have a bath to suit any style or budget and we have combined them all here in our easy to access Product Range for 2019.

For more information and to view the entire range visit www.carronbathrooms.com/bath-range/



Contents

Designed with trade professionals in mind, the Product Range brochure from Carron Bathrooms is back for 2019.

| | |
|---|-----------|
| Welcome | 04 |
| A quick guide to what's new in the world of Carron. | |
| Carronite | 06 |
| Carron's unique, patented finishing system. | |
| Best Sellers | 08 |
| A guide to popular models in the Carron range. | |
| ColourMatch | 12 |
| Our unique ColourMatch service gives the customer creative freedom. | |
| Showerbaths Feature | 14 |
| An insight into our popular, stylish and practical range of Showerbaths. | |
| Service | 16 |
| The famous Carron quality doesn't stop when you've ordered our baths. | |
| Made in Britain | 17 |
| Every Carron bath designed, built and hand finished in Britain. | |
| Whirlpool | 18 |
| We have a range of C-Lenda Whirlpool options available across the Carron range. | |
| Finishing Touches | 19 |
| Screens and panels to match. | |
| Product Range | 20 |
| Every product, every size, every price. | |
| Baths by Size | 42 |
| Our entire range, listed by size for quick and easy specification. | |

Welcome to Carron

Carron Bathrooms, reliable in an ever changing market.

Carron Bathrooms are famous for our range of high quality products. For us, however, this is nothing if it's not backed up by great service, support and reliability. Everyone from the distributor, merchant, showroom and fitter, right down to the end customer, needs to know they are buying a product they can trust. That's why we make products the industry wants delivered with a service they can rely on.



Axis

The strength of Carronite

Carronite™ was created by Carron Bathrooms to provide a higher level of comfort, luxury and peace of mind for our customers.

All Carron Bathrooms baths are hand finished to our exacting standards but only Carronite™ baths, with our unique, patented, triple-layer reinforcement system come with a 30 year guarantee – proof of the confidence we have in Carronite™. Carronite™ baths are stronger and heavier than standard acrylic baths.

The additional finishing layers crafted during the Carronite™ process create a uniquely reinforced product. The added weight requires a bespoke fitting system that only adds to the stability and rigid feel of our Carronite™ baths. These elements combined help deliver the Carronite™ experience.



THE FRAME

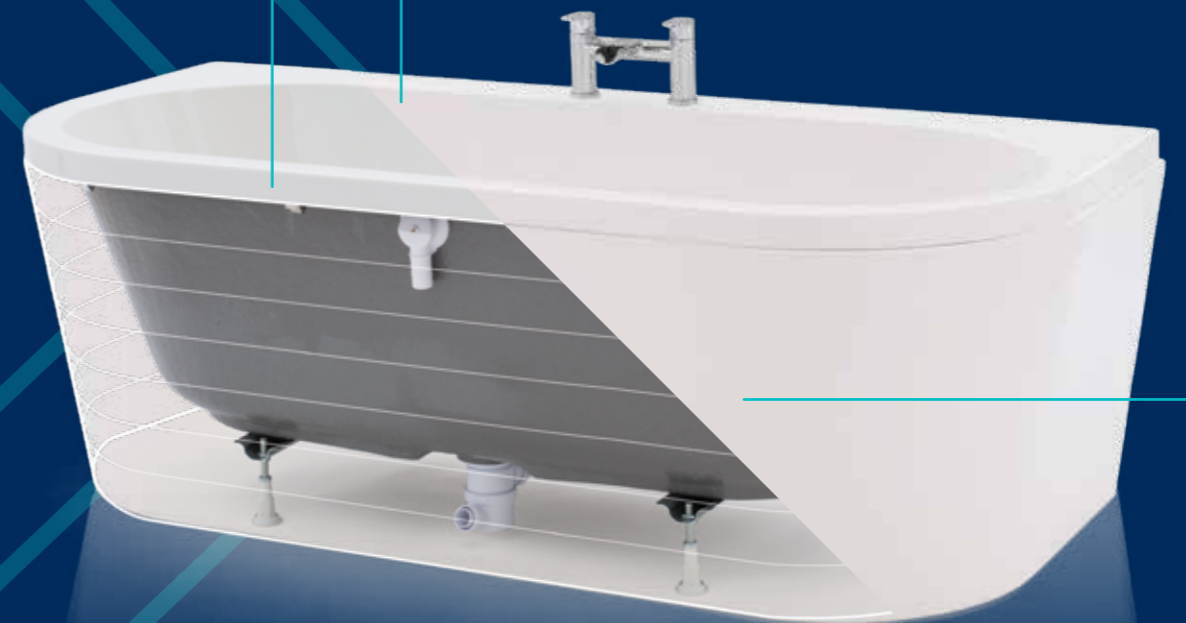
Created specifically for the Carronite™ Baseboard, this unique frame, and foot set uses the added weight and thickness of our baths to deliver additional stability and security.

THE FINISH

Specially formulated, our unique Carronite finish results in increased rigidity while the density of the material allows greater heat retaining properties.

THE BASEBOARD

Custom baseboards, cut to size for each Carronite model, are applied by hand before the Carronite finish is applied.



STRONGER

It's our patented process that creates the added strength found in all Carronite™ baths. A stronger bath is a more rigid bath, resulting in a more solid experience when bathing or showering.



WARMER FOR LONGER

Due to the extra finishing layers, Carronite™ baths are able to keep water temperature levels hotter for longer. Up to thirty minutes longer in some tests.



PEACE OF MIND

We are so confident in the quality and finish of our Carronite™ baths that we give every bath a 30-year guarantee. That's because Carronite™ baths are designed to last a lifetime.

Our Best Sellers

Check out the Carron baths that consistently make our best sellers list.



Profile:
10 OPTIONS

The thin edge on this bath design pushes the limits of acrylic manufacturing yet still accommodates a shower screen.



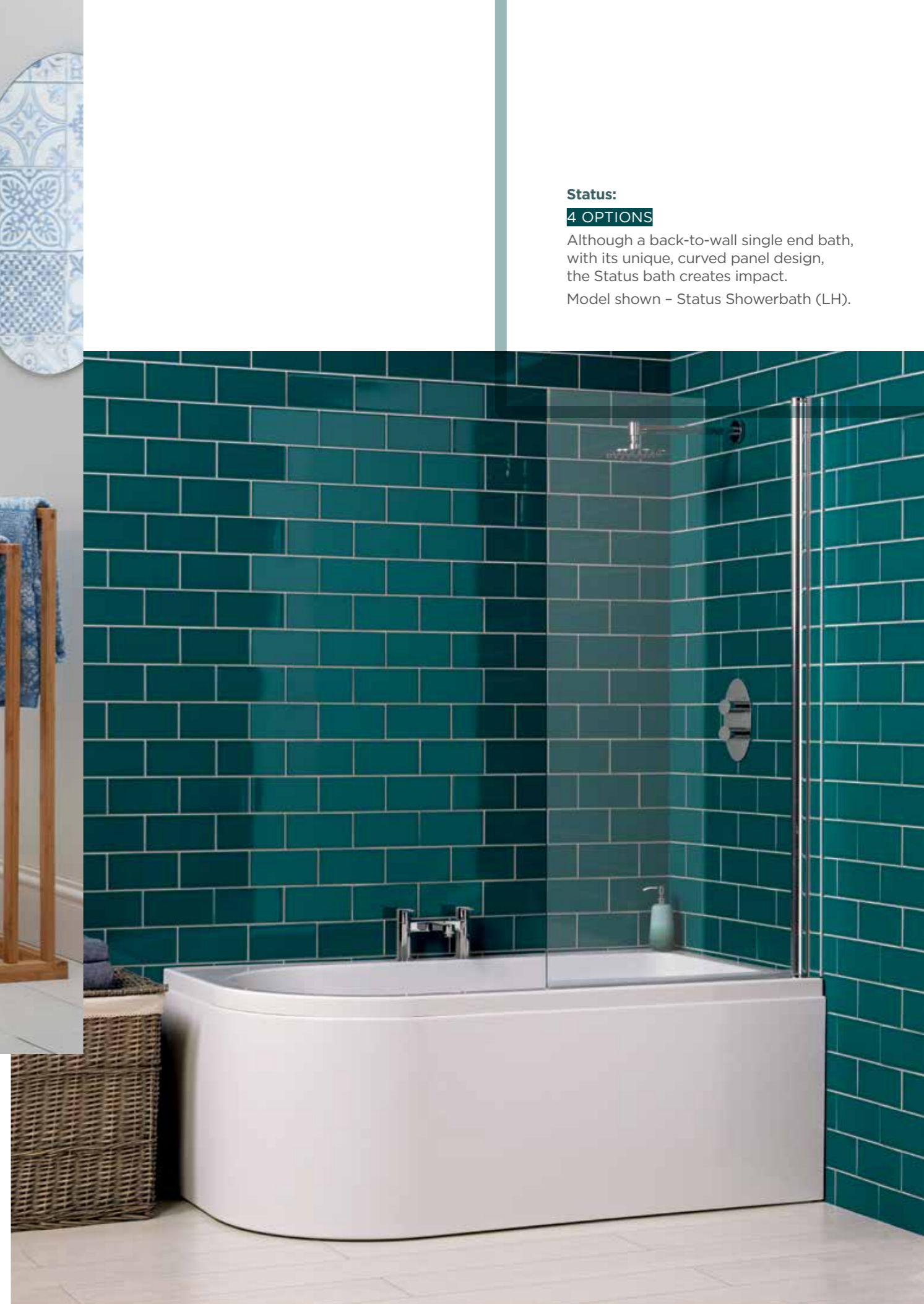
Quantum Integra:
11 OPTIONS

Part of the six model strong, Quantum range. Available in seven sizes variations.



Camden:
3 OPTIONS

This single end bath was designed to compliment our high-end, Highgate range.



Status:

4 OPTIONS

Although a back-to-wall single end bath, with its unique, curved panel design, the Status bath creates impact.

Model shown - Status Showerbath (LH).

ColourMatch by Carron

There's a Carron bath for every style of bathroom. With ColourMatch, there's a colour for every style of customer.

Bathrooms need to be practical and reliable but that doesn't mean they need to be boring. With our unique, ColourMatch service you can choose a colour, any colour, so Carron can match your bath panel to your bathroom design to help add that personal touch.

ColourMatch service available on certain models only. For further details please visit www.carronbathrooms.com/colourmatch



Showerbaths

Designed for showering whilst retaining the option of a luxury bath, our showerbaths all come with matching shower screens and panels.

When space is at a premium, our extensive range of Showerbaths can provide the perfect solution. From the modern, minimalist design of our Quantum range, to the smooth curves of our unusual Profile showerbath, we have an option for every space, and every taste. With both the practicality of a generous showering area and the opportunity for a relaxing bath, these models truly combine the best of both worlds. Complement your showerbath with our comprehensive range of panels, L-panels and screens, and that awkward installation quickly turns into a dream bathroom.



Service

We don't just deliver baths, we deliver an end-to-end service

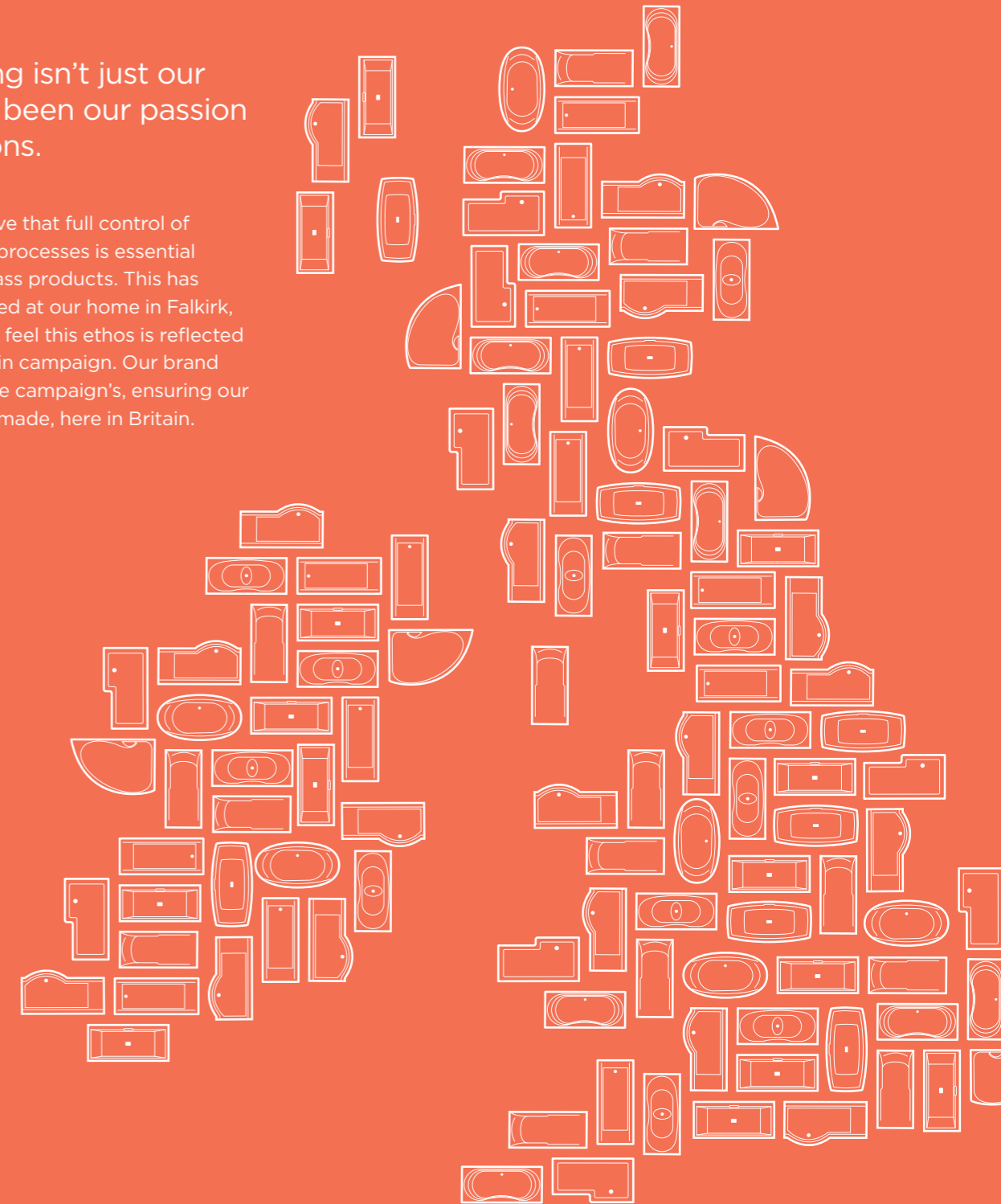
Time is money so the less of it wasted the better. In-depth stock holding combined with our online 'Bath Finder' feature, distribution network and expert customer service means our baths can be ready for dispatch within 24 hours of ordering.



Made in Britain

Manufacturing isn't just our business, it's been our passion for generations.

At Carron, we believe that full control of our manufacturing processes is essential in delivering first class products. This has always been achieved at our home in Falkirk, Stirlingshire and we feel this ethos is reflected in the Made in Britain campaign. Our brand stands alongside the campaign's, ensuring our products are hand-made, here in Britain.



C-Lenda Whirlpool Systems

The C-Lenda Whirlpool system is the most technologically advanced system available on today's market. This unique jet system has been designed by Markon in New Zealand and ensures the most comfortable bathing experience. Almost all baths in the Carron range are compatible with this whirlpool system and are made to order by our skilled technicians at our factory in Falkirk.

| | | | | |
|---|------------------|--|------------------|---|
| SYSTEM 1 | £1,255.20 | SYSTEM 4 | £1,566.00 | OPTIONAL EXTRAS |
| SYSTEM OPTIONS: PNEUMATIC CONTROLS, 6 SIDE JETS | | SYSTEM OPTIONS: ELECTRONIC CONTROLS, 6 SIDE JETS | | CHROMOTHERAPY £316.80 EXTRA SIDE JETS (PAIR) £159.60 |
| SYSTEM 2 | £1,566.00 | SYSTEM 5 | £1,890.00 | |
| SYSTEM OPTIONS: PNEUMATIC CONTROLS, 6 SIDE JETS, 6 BACK JETS, 4 FEET JETS | | SYSTEM OPTIONS: ELECTRONIC CONTROLS, 6 SIDE JETS, 6 BACK JETS, 4 FEET JETS | | |
| SYSTEM 3 | £1,890.00 | SYSTEM 6 | £2,200.80 | |
| SYSTEM OPTIONS: PNEUMATIC CONTROLS, 6 SIDE JETS, 6 BACK JETS, 4 FEET JETS, CHROMOTHERAPY LIGHT | | SYSTEM OPTIONS: ELECTRONIC CONTROLS, 6 SIDE JETS, 6 BACK JETS, 4 FEET JETS, CHROMOTHERAPY LIGHT | | |

For Whirlpool compatibility please visit www.carronbathrooms.com or contact your stockist



Finishing Touches

Panels, Screens & Accessories

Designed and manufactured specifically to fit perfectly with the Carron range. You can be guaranteed a perfect fit and an easy install.

1. All Carron showerbaths have a custom designed screen available.
2. Our clip in bath panels are manufactured in house to ensure a perfect fit.
3. Carron standard flatscreens come in two height and shape options.



1

EXTENSIVE RANGE OF PANELS AVAILABLE

2

L-PANELS AVAILABLE FOR MOST MODELS.

3

CUSTOM DESIGNED SHOWER SCREENS

Rectangular Baths

What makes the Carron Bathrooms Product Range unique is the vast range of bath options available. Every one built then finished by hand to reach our highest levels of quality and conformity.

Contents

| | | | |
|---------------------|----|----------------------------|----|
| Alpha | 21 | Linea | 25 |
| Apex | 21 | Mistral | 25 |
| Arc | 21 | Matrix | 25 |
| Arc Duo | 21 | Profile | 25 |
| Axis | 22 | Profile Duo | 26 |
| Britannia | 22 | Quantum Duo | 26 |
| Camden | 22 | Quantum Integra | 26 |
| Delta | 22 | Quantum Integra Eco | 26 |
| Echelon | 23 | Quantum Spacesaver | 27 |
| Equation | 23 | Quantum SE | 27 |
| Equity | 23 | Status | 27 |
| Haiku | 23 | Sigma | 27 |
| Highgate Duo | 24 | Swallow TG | 28 |
| Highgate SE | 24 | Urban | 28 |
| Index | 24 | Urban Sitbath | 28 |
| Imperial TG | 24 | | |



Alpha

FEATURES:



| LENGTH x WIDTH | HEIGHT | DEPTH | CAPACITY |
|---------------------|--------|-------|------------|
| 1700 x 700mm | 515mm | 400mm | 160 Litres |
| 1700 x 750mm | 540mm | 425mm | 175 Litres |
| 1800 x 800mm | 540mm | 440mm | 220 Litres |



Apex

FEATURES:



| LENGTH x WIDTH | HEIGHT | DEPTH | CAPACITY |
|---------------------|--------|-------|------------|
| 1700 x 800mm | 540mm | 430mm | 210 Litres |



Arc

FEATURES:



| LENGTH x WIDTH | HEIGHT | DEPTH | CAPACITY |
|---------------------|--------|-------|------------|
| 1500 x 700mm | 515mm | 400mm | 150 Litres |
| 1700 X 700mm | 515mm | 400mm | 172 Litres |
| 1700 X 750mm | 540mm | 420mm | 195 Litres |



Arc Duo

FEATURES:



| LENGTH x WIDTH | HEIGHT | DEPTH | CAPACITY |
|---------------------|--------|-------|------------|
| 1700 x 750mm | 540mm | 420mm | 190 Litres |
| 1800 x 800mm | 540mm | 430mm | 210 Litres |

| | | | |
|------------------------|--|---------------------------|--|
| Suitable for Showering | | Ease of access | |
| Water saver | | Handgrip option available | |
| Carronite™ | | Whirlpool | |
| Panel available | | | |

All models available in Carronite™ finish.



Axis

FEATURES:



| LENGTH x WIDTH | HEIGHT | DEPTH | CAPACITY |
|---------------------|--------|-------|------------|
| 1500 x 700mm | 430mm | 345mm | 131 Litres |
| 1600 x 700mm | 430mm | 345mm | 138 Litres |
| 1700 x 700mm | 430mm | 345mm | 145 Litres |



Britannia

FEATURES:



| LENGTH x WIDTH | HEIGHT | DEPTH | CAPACITY |
|---------------------|--------|-------|------------|
| 1700 x 700mm | 515mm | 370mm | 155 Litres |
| 1700 x 750mm | 540mm | 460mm | 210 Litres |
| 1800 x 800mm | 540mm | 430mm | 245 Litres |

Whirlpool only available for 750mm & 800mm.



Echelon (inc filler)

FEATURES:



| LENGTH x WIDTH | HEIGHT | DEPTH | CAPACITY |
|---------------------|--------|-------|------------|
| 1700 x 750mm | 540mm | 420mm | 209 Litres |
| 1800 x 800mm | 540mm | 440mm | 230 Litres |



Equation

FEATURES:



| LENGTH x WIDTH | HEIGHT | DEPTH | CAPACITY |
|---------------------|--------|-------|------------|
| 1700 x 750mm | 540mm | 420mm | 205 Litres |
| 1800 x 800mm | 540mm | 430mm | 233 Litres |



Camden

FEATURES:



| LENGTH x WIDTH | HEIGHT | DEPTH | CAPACITY |
|---------------------|--------|-------|------------|
| 1600 x 700mm | 515mm | 405mm | 192 Litres |
| 1650 X 700mm | 515mm | 400mm | 200 Litres |
| 1700 X 700mm | 515mm | 405mm | 209 Litres |



Delta

FEATURES:



| LENGTH x WIDTH | HEIGHT | DEPTH | CAPACITY |
|---------------------|--------|-------|------------|
| 1400 x 700mm | 515mm | 410mm | 142 Litres |
| 1500 x 700mm | 515mm | 410mm | 152 Litres |
| 1600 x 700mm | 515mm | 410mm | 162 Litres |
| 1650 x 700mm | 515mm | 410mm | 167 Litres |
| 1675 x 700mm | 515mm | 410mm | 170 Litres |
| 1700 x 700mm | 515mm | 410mm | 170 Litres |



Equity

FEATURES:



| LENGTH x WIDTH | HEIGHT | DEPTH | CAPACITY |
|---------------------|--------|-------|------------|
| 1700 x 750mm | 540mm | 420mm | 204 Litres |
| 1800 x 800mm | 540mm | 440mm | 225 Litres |



Haiku

FEATURES:



| LENGTH x WIDTH | HEIGHT | DEPTH | CAPACITY |
|---------------------|--------|-------|------------|
| 1700 x 800mm | 540mm | 450mm | 220 Litres |
| 1800 x 800mm | 540mm | 450mm | 230 Litres |
| 1800 x 900mm | 540mm | 450mm | 290 Litres |

| | | | |
|------------------------|--|---------------------------|--|
| Suitable for Showering | | Ease of access | |
| Water saver | | Handgrip option available | |
| Carronite™ | | Whirlpool | |
| Panel available | | | |

For Whirlpool compatibility please visit www.carronbathrooms.com or contact your stockist



Highgate Duo

FEATURES:



| LENGTH x WIDTH | HEIGHT | DEPTH | CAPACITY |
|---------------------|--------|-------|------------|
| 1700 x 750mm | 540mm | 430mm | 210 Litres |
| 1800 X 800mm | 540mm | 430mm | 264 Litres |



Highgate SE

FEATURES:



| LENGTH x WIDTH | HEIGHT | DEPTH | CAPACITY |
|---------------------|--------|-------|------------|
| 1700 x 750mm | 540mm | 420mm | 216 Litres |
| 1800 X 800mm | 540mm | 430mm | 268 Litres |



Linea

FEATURES:



| LENGTH x WIDTH | HEIGHT | DEPTH | CAPACITY |
|---------------------|--------|-------|------------|
| 1900 x 900mm | 570mm | 460mm | 345 Litres |



Mistral

FEATURES:



| LENGTH x WIDTH | HEIGHT | DEPTH | CAPACITY |
|-------------------------|--------|-------|------------|
| 1800 x 700-900mm | 570mm | 480mm | 330 Litres |



Index

FEATURES:



| LENGTH x WIDTH | HEIGHT | DEPTH | CAPACITY |
|---------------------|--------|-------|------------|
| 1700 x 750mm | 540mm | 430mm | 195 Litres |



Imperial TG

FEATURES:



| LENGTH x WIDTH | HEIGHT | DEPTH | CAPACITY |
|---------------------|--------|-------|------------|
| 1400 x 700mm | 515mm | 400mm | 135 Litres |
| 1500 x 700mm | 515mm | 400mm | 145 Litres |
| 1600 x 700mm | 515mm | 400mm | 162 Litres |
| 1675 x 700mm | 515mm | 400mm | 180 Litres |
| 1700 x 700mm | 515mm | 400mm | 180 Litres |
| 1800 x 750mm | 540mm | 420mm | 210 Litres |



Matrix

FEATURES:



| LENGTH x WIDTH | HEIGHT | DEPTH | CAPACITY |
|---------------------|--------|-------|------------|
| 1500 x 700mm | 515mm | 345mm | 131 Litres |
| 1600 x 700mm | 515mm | 345mm | 138 Litres |
| 1700 x 700mm | 515mm | 345mm | 145 Litres |



Profile

FEATURES:



| LENGTH x WIDTH | HEIGHT | DEPTH | CAPACITY |
|---------------------|--------------|--------------|-------------------|
| 1500 x 700mm | 515mm | 400mm | 190 Litres |
| 1600 x 700mm | 515mm | 400mm | 204 Litres |
| 1700 x 700mm | 515mm | 400mm | 218 Litres |
| 1700 x 750mm | 540mm | 430mm | 257 Litres |
| 1800 x 700mm | 540mm | 400mm | 255 Litres |

| | | | |
|------------------------|--|---------------------------|--|
| Suitable for Showering | | Ease of access | |
| Water saver | | Handgrip option available | |
| Carronite™ | | Whirlpool | |
| Panel available | | | |

For Whirlpool compatibility please visit www.carronbathrooms.com or contact your stockist



New Size

Profile Duo

FEATURES:



| LENGTH x WIDTH | HEIGHT | DEPTH | CAPACITY |
|----------------|--------|-------|------------|
| 1600 x 700mm | 515mm | 410mm | 188 Litres |
| 1650 x 700mm | 515mm | 410mm | 200 Litres |
| 1700 x 700mm | 515mm | 410mm | 205 Litres |
| 1700 x 750mm | 540mm | 410mm | 230 Litres |
| 1800 x 700mm | 540mm | 410mm | 231 Litres |

Whirlpool only available for 750mm.



Quantum Duo

FEATURES:



| LENGTH x WIDTH | HEIGHT | DEPTH | CAPACITY |
|----------------|--------|-------|------------|
| 1700 x 700mm | 515mm | 410mm | 165 Litres |
| 1700 x 750mm | 540mm | 430mm | 190 Litres |
| 1700 x 800mm | 540mm | 440mm | 200 Litres |
| 1800 x 800mm | 540mm | 440mm | 230 Litres |
| 1900 x 900mm | 570mm | 450mm | 350 Litres |



Quantum Spacesaver

FEATURES:



| LENGTH x WIDTH | HEIGHT | DEPTH | CAPACITY |
|------------------|--------|-------|------------|
| 1700 x 400-750mm | 540mm | 420mm | 211 Litres |

Available in right hand or left hand. Right hand shown.



Quantum SE

FEATURES:



| LENGTH x WIDTH | HEIGHT | DEPTH | CAPACITY |
|----------------|--------|-------|------------|
| 1500 x 700mm | 515mm | 410mm | 198 Litres |
| 1600 x 700mm | 515mm | 410mm | 213 Litres |
| 1600 x 800mm | 540mm | 430mm | 247 Litres |
| 1700 x 700mm | 515mm | 410mm | 228 Litres |
| 1700 x 750mm | 540mm | 430mm | 240 Litres |
| 1700 x 800mm | 540mm | 440mm | 267 Litres |
| 1700 x 900mm | 540mm | 440mm | 318 Litres |
| 1800 x 725mm | 540mm | 440mm | 266 Litres |
| 1800 x 800mm | 540mm | 440mm | 285 Litres |



Quantum Integra

FEATURES:



| LENGTH x WIDTH | HEIGHT | DEPTH | CAPACITY |
|----------------|--------|-------|------------|
| 1500 x 700mm | 515mm | 410mm | 198 Litres |
| 1600 x 700mm | 515mm | 410mm | 213 Litres |
| 1650 x 700mm | 515mm | 410mm | 216 Litres |
| 1700 x 700mm | 515mm | 410mm | 228 Litres |
| 1700 x 750mm | 540mm | 430mm | 240 Litres |
| 1700 x 800mm | 540mm | 440mm | 267 Litres |
| 1800 x 800mm | 540mm | 440mm | 285 Litres |



Quantum Integra Eco

FEATURES:



| LENGTH x WIDTH | HEIGHT | DEPTH | CAPACITY |
|----------------|--------|-------|------------|
| 1500 x 700mm | 430mm | 345mm | 152 Litres |
| 1500 x 700mm | 515mm | 345mm | 152 Litres |
| 1600 x 700mm | 430mm | 345mm | 165 Litres |
| 1600 x 700mm | 515mm | 345mm | 165 Litres |
| 1700 x 700mm | 430mm | 345mm | 174 Litres |
| 1700 x 700mm | 515mm | 345mm | 174 Litres |



Status

FEATURES:



| LENGTH x WIDTH | HEIGHT | DEPTH | CAPACITY |
|----------------|--------|-------|------------|
| 1600 x 725mm | 540mm | 425mm | 197 Litres |
| 1700 x 725mm | 540mm | 425mm | 205 Litres |
| 1700 x 800mm | 540mm | 450mm | 250 Litres |

Available in right hand or left hand. Right hand shown.



Sigma

FEATURES:



| LENGTH x WIDTH | HEIGHT | DEPTH | CAPACITY |
|----------------|--------|-------|------------|
| 1600 x 750mm | 540mm | 420mm | 175 Litres |
| 1700 x 750mm | 540mm | 440mm | 195 Litres |
| 1700 x 800mm | 540mm | 450mm | 220 Litres |
| 1800 x 800mm | 540mm | 450mm | 240 Litres |
| 1900 x 900mm | 570mm | 460mm | 350 Litres |

| | | | |
|------------------------|--|---------------------------|--|
| Suitable for Showering | | Ease of access | |
| Water saver | | Handgrip option available | |
| Carronite™ | | Whirlpool | |
| Panel available | | | |

For Whirlpool compatibility please visit www.carronbathrooms.com or contact your stockist



Swallow TG

FEATURES:



| LENGTH x WIDTH | HEIGHT | DEPTH | CAPACITY |
|---------------------|--------|-------|------------|
| 1700 x 700mm | 515mm | 370mm | 155 Litres |
| 1800 x 700mm | 540mm | 365mm | 185 Litres |



Urban

FEATURES:



| LENGTH x WIDTH | HEIGHT | DEPTH | CAPACITY |
|---------------------|--------|-------|------------|
| 1700 x 725mm | 540mm | 410mm | 224 Litres |



Urban Sitbath

FEATURES:




| LENGTH x WIDTH | HEIGHT | DEPTH | CAPACITY |
|---------------------|--------|-------|------------|
| 1250 x 725mm | 540mm | 450mm | 155 Litres |

Depth at deepest point.

For Whirlpool compatibility please visit www.carronbathrooms.com or contact your stockist

Grip Options

Chrome handgrips available on rectangular baths with the Handgrip Icon  Please order using appropriate product code.



CCG-1
Chrome Handgrip
Delta, Sigma



CCG-2
Chrome Handgrip
Axis, Matrix, Index, Apex, Arc

Shower Baths:

The best of both worlds.

When it comes to bathing, Showerbaths can answer and solve bathroom fit-out problems. Not every bathroom can accommodate a separate shower cubicle and for busy families, especially those with small children, getting rid of the bath is not an option. This is where a Showerbath comes in. With a footprint similar to that of a standard rectangular bath and a large, dedicated showering area you can have the best of both worlds.

Contents

| | |
|---------------------|----|
| Arc | 30 |
| Aspect | 30 |
| Delta | 30 |
| Highgate Showerbath | 30 |
| Profile Showerbath | 31 |
| Sigma | 31 |
| Quantum | 31 |
| Status Showerbath | 31 |
| Urban Compact | 32 |
| Urban | 32 |
| Urban Edge | 32 |
| Urban Swing | 32 |





Arc

FEATURES:



| LENGTH x WIDTH | HEIGHT | DEPTH | CAPACITY |
|-------------------------|--------|-------|------------|
| 1700 x 700-850mm | 540mm | 430mm | 250 Litres |

Available in right hand or left hand. Left hand shown.



Aspect

FEATURES:



| LENGTH x WIDTH | HEIGHT | DEPTH | CAPACITY |
|-------------------------|--------|-------|------------|
| 1700 x 700-800mm | 430mm | 345mm | 190 Litres |



Profile Showerbath

FEATURES:



| LENGTH x WIDTH | HEIGHT | DEPTH | CAPACITY |
|---------------------|--------|-------|------------|
| 1500 x 900mm | 540mm | 440mm | 241 Litres |

Available in right hand or left hand. Left hand shown.
Not suitable to be recessed.



Sigma

FEATURES:



| LENGTH x WIDTH | HEIGHT | DEPTH | CAPACITY |
|-------------------------|--------|-------|------------|
| 1800 x 750-900mm | 540mm | 450mm | 265 Litres |

Available in right hand or left hand. Left hand shown.



Delta

FEATURES:



| LENGTH x WIDTH | HEIGHT | DEPTH | CAPACITY |
|-------------------------|--------|-------|------------|
| 1600 x 700-800mm | 540mm | 410mm | 210 Litres |
| 1700 x 700-800mm | 540mm | 420mm | 230 Litres |

Available in right hand or left hand. Left hand shown.



Highgate Showerbath

FEATURES:



| LENGTH x WIDTH | HEIGHT | DEPTH | CAPACITY |
|-------------------------|--------|-------|------------|
| 1700 x 750-900mm | 540mm | 430mm | 272 Litres |

Available in right hand or left hand. Left hand shown.



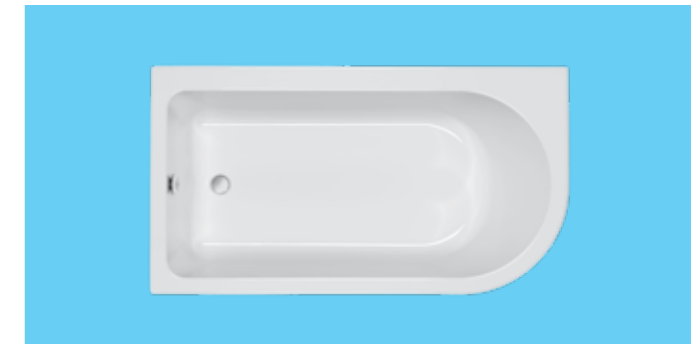
Quantum

FEATURES:



| LENGTH x WIDTH | HEIGHT | DEPTH | CAPACITY |
|-------------------------|--------|-------|------------|
| 1500 x 700-850mm | 540mm | 420mm | 229 Litres |
| 1600 x 700-850mm | 540mm | 420mm | 250 Litres |
| 1700 x 700-850mm | 540mm | 420mm | 265 Litres |

Available in right hand or left hand. Left hand shown.



Status Showerbath

FEATURES:

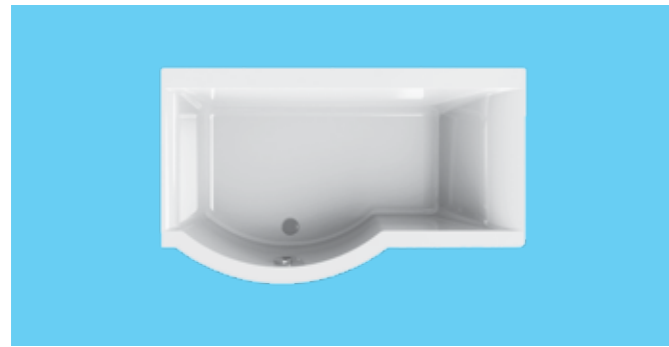


| LENGTH x WIDTH | HEIGHT | DEPTH | CAPACITY |
|---------------------|--------|-------|------------|
| 1550 x 850mm | 540mm | 450mm | 262 Litres |

Available in right hand or left hand. Right hand shown.

For Whirlpool compatibility please visit www.carronbathrooms.com or contact your stockist

| | | | |
|------------------------|--|---------------------------|--|
| Suitable for Showering | | Ease of access | |
| Water saver | | Handgrip option available | |
| Carronite™ | | Whirlpool | |
| Panel available | | | |



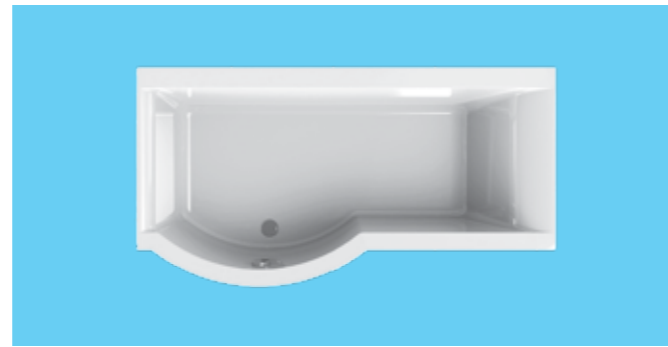
Urban Compact

FEATURES:



| LENGTH x WIDTH | HEIGHT | DEPTH | CAPACITY |
|-------------------------|--------|-------|------------|
| 1500 x 750-900mm | 540mm | 420mm | 228 Litres |

Available in right hand or left hand. Left hand shown.



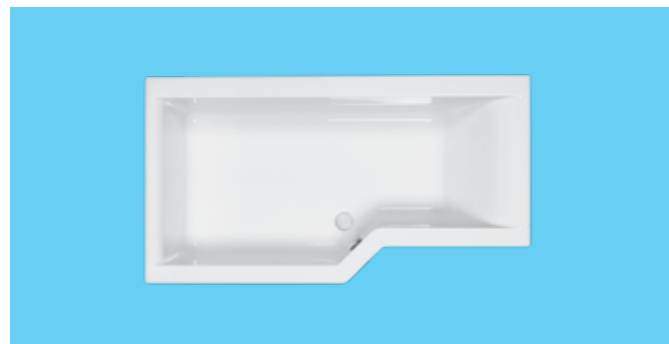
Urban

FEATURES:



| LENGTH x WIDTH | HEIGHT | DEPTH | CAPACITY |
|------------------------|--------|-------|------------|
| 1700 x 750-900m | 540mm | 420mm | 260 Litres |

Available in right hand or left hand. Left hand shown.



Urban Edge

FEATURES:



| LENGTH x WIDTH | HEIGHT | DEPTH | CAPACITY |
|-------------------------|--------|-------|------------|
| 1575 x 700-850mm | 540mm | 420mm | 225 Litres |
| 1675 x 700-850mm | 540mm | 420mm | 245 Litres |

Available in right hand or left hand. Left hand shown.



Urban Swing

FEATURES:



| LENGTH x WIDTH | HEIGHT | DEPTH | CAPACITY |
|---------------------|--------|-------|------------|
| 1575 x 850mm | 540mm | 420mm | 225 Litres |

Available in right hand or left hand. Left hand shown.

For Whirlpool compatibility please visit www.carronbathrooms.com or contact your stockist

Freestanding Baths

Opulent, stylish, yet still practical, Carron Freestanding baths make the right statement in any luxury setting. If you value high quality manufacturing, you will value Carron Freestanding baths.

Contents

| | |
|-----------------------|----|
| Ascoli | 34 |
| Celsius | 34 |
| Elysee | 34 |
| Halcyon D | 34 |
| Halcyon Oval | 35 |
| Halcyon Square | 35 |
| Highgate Freestanding | 35 |
| Paradigm | 35 |





Ascoli

FEATURES:



| LENGTH x WIDTH | HEIGHT | DEPTH | CAPACITY |
|---------------------|--------|-------|------------|
| 1700 x 750mm | 655mm | 475mm | 252 Litres |

Inset option available.

Celsius

FEATURES:



| LENGTH x WIDTH | HEIGHT | DEPTH | CAPACITY |
|---------------------|--------|-------|------------|
| 1910 x 910mm | 610mm | 450mm | 330 Litres |

Includes Filler.



Halcyon Oval

FEATURES:



| LENGTH x WIDTH | HEIGHT | DEPTH | CAPACITY |
|---------------------|--------|-------|------------|
| 1750 x 800mm | 610mm | 450mm | 270 Litres |

Inset option available.

Halcyon Square

FEATURES:



| LENGTH x WIDTH | HEIGHT | DEPTH | CAPACITY |
|---------------------|--------|-------|------------|
| 1750 x 800mm | 600mm | 440mm | 286 Litres |

Inset option available.



Elysee

FEATURES:



| LENGTH x WIDTH | HEIGHT | DEPTH | CAPACITY |
|---------------------|--------|-------|------------|
| 1800 x 900mm | 650mm | 480mm | 330 Litres |

Inset option available.

Halcyon D

FEATURES:



| LENGTH x WIDTH | HEIGHT | DEPTH | CAPACITY |
|---------------------|--------|-------|------------|
| 1750 x 800mm | 602mm | 450mm | 253 Litres |



Highgate Freestanding

FEATURES:



| LENGTH x WIDTH | HEIGHT | DEPTH | CAPACITY |
|---------------------|--------|-------|------------|
| 1750 x 800mm | 630mm | 440mm | 265 Litres |

Paradigm

FEATURES:



| LENGTH x WIDTH | HEIGHT | DEPTH | CAPACITY |
|---------------------|-----------|-------|------------|
| 1550 x 850mm | 620-660mm | 480mm | 238 Litres |

For Whirlpool compatibility please visit www.carronbathrooms.com or contact your stockist

| | | | |
|------------------------|--|---------------------------|--|
| Suitable for Showering | | Ease of access | |
| Water saver | | Handgrip option available | |
| Carronite™ | | Whirlpool | |
| Panel available | | | |

Celsius Baths

As Carron's signature range, our Celsius baths never compromise on comfort and luxury while remaining stylish and bold. Available in Standard, Showerbath, Duo and Freestanding options.

Contents

| | |
|--------------------|----|
| Celsius | 37 |
| Celsius 1800 | 37 |
| Celsius Duo | 37 |
| Celsius Oval | 37 |
| Celsius Showerbath | 38 |



Celsius

FEATURES:



| LENGTH x WIDTH | HEIGHT | DEPTH | CAPACITY |
|---------------------|--------|-------|------------|
| 1700 x 700mm | 540mm | 430mm | 265 Litres |
| 1700 x 750mm | 540mm | 450mm | 275 Litres |

Available in right hand or left hand. Right hand shown.



Celsius 1800

FEATURES:



| LENGTH x WIDTH | HEIGHT | DEPTH | CAPACITY |
|---------------------|--------|-------|------------|
| 1800 x 800mm | 540mm | 450mm | 300 Litres |



Celsius Duo

FEATURES:



| LENGTH x WIDTH | HEIGHT | DEPTH | CAPACITY |
|----------------------|--------|-------|------------|
| 2000 x 1400mm | 570mm | 480mm | 560 Litres |

*Extended systems - please ask for more details.



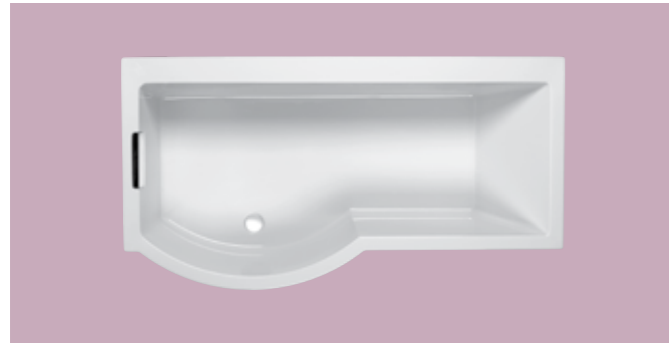
Celsius Oval

FEATURES:



| LENGTH x WIDTH | HEIGHT | DEPTH | CAPACITY |
|----------------------|--------|-------|------------|
| 1900 x 1000mm | 570mm | 470mm | 320 Litres |

| | | | |
|------------------------|--|---------------------------|--|
| Suitable for Showering | | Ease of access | |
| Water saver | | Handgrip option available | |
| Carronite™ | | Whirlpool | |
| Panel available | | | |



Celsius Showerbath

FEATURES:



| LENGTH x WIDTH | HEIGHT | DEPTH | CAPACITY |
|------------------|--------|-------|------------|
| 1700 x 750-900mm | 540mm | 450mm | 305 Litres |

Available in right hand or left hand. Left hand shown.



Corner Baths

Ideal where space and layout are an issue, our Corner bath range combines great design with practicality.

Contents

| | |
|-------------|----|
| Centennial | 40 |
| Dove | 40 |
| Monarch | 40 |
| Omega | 40 |
| Oriole | 41 |
| Tranquility | 41 |
| Clipper | 41 |





Centennial

FEATURES:



| LENGTH x WIDTH | HEIGHT | DEPTH | CAPACITY |
|----------------------|--------|-------|------------|
| 1500 x 1500mm | 570mm | 495mm | 407 Litres |



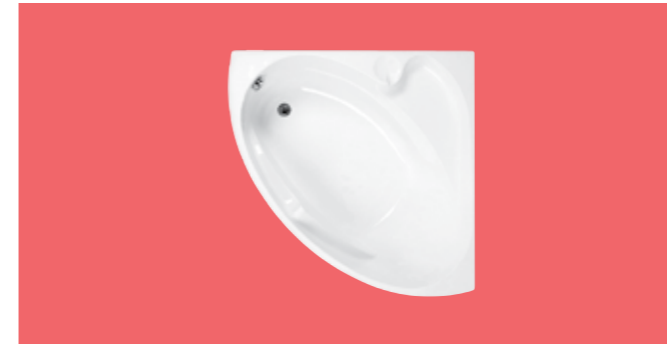
Dove

FEATURES:



| LENGTH x WIDTH | HEIGHT | DEPTH | CAPACITY |
|---------------------|--------|-------|------------|
| 1550 x 950mm | 540mm | 400mm | 190 Litres |

Available in right hand or left hand. Left hand shown.



Oriole

FEATURES:



| LENGTH x WIDTH | HEIGHT | DEPTH | CAPACITY |
|----------------------|--------|-------|------------|
| 1200 x 1200mm | 540mm | 400mm | 190 Litres |

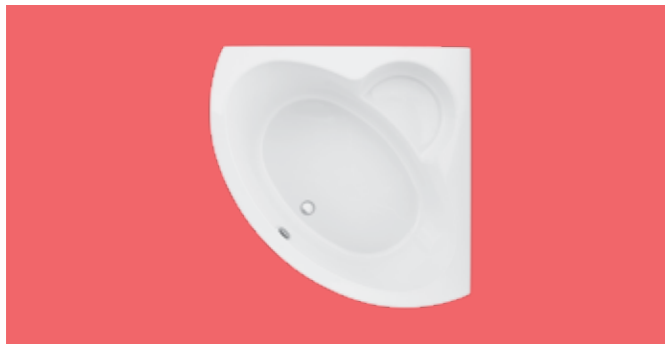


Tranquility

FEATURES:



| LENGTH x WIDTH | HEIGHT | DEPTH | CAPACITY |
|----------------------|--------|-------|------------|
| 1300 x 1300mm | 540mm | 450mm | 295 Litres |



Monarch

FEATURES:



| LENGTH x WIDTH | HEIGHT | DEPTH | CAPACITY |
|----------------------|--------|-------|------------|
| 1300 x 1300mm | 540mm | 400mm | 235 Litres |



Omega

FEATURES:



| LENGTH x WIDTH | HEIGHT | DEPTH | CAPACITY |
|----------------------|--------|-------|------------|
| 1700 x 1000mm | 540mm | 445mm | 255 Litres |

Available in right hand or left hand. Left hand shown.



Clipper

FEATURES:



| LENGTH x WIDTH | HEIGHT | DEPTH | CAPACITY |
|----------------------|--------|-------|------------|
| 1200 x 1575mm | 580mm | 475mm | 335 Litres |

Available in right hand or left hand. Left hand shown.

For Whirlpool compatibility please visit www.carronbathrooms.com or contact your stockist

| | | | |
|------------------------|--|---------------------------|--|
| Suitable for Showering | | Ease of access | |
| Water saver | | Handgrip option available | |
| Carronite™ | | Whirlpool | |
| Panel available | | | |

RECTANGULAR BATHS

1250 X 725

URBAN SITBATH

| | | |
|-----------|---------|-------------|
| 5mm | £348.00 | Code: 02445 |
| Carronite | £550.80 | Code: 02446 |

1400 X 700

DELTA

| | | |
|-----------|---------|-------------|
| 5mm | £349.20 | Code: 02047 |
| Carronite | £633.60 | Code: 02048 |

IMPERIAL TG

| | | |
|-----------|---------|-------------|
| 5mm | £266.40 | Code: 02455 |
| Carronite | £495.60 | Code: 02456 |

1500 X 700

ARC SE

| | | |
|-----------|---------|-------------|
| 5mm | £255.60 | Code: 02443 |
| Carronite | £489.60 | Code: 02444 |

AXIS

| | | |
|-----------|---------|-------------|
| 5mm | £272.40 | Code: 02029 |
| Carronite | £511.20 | Code: 02030 |

DELTA

| | | |
|-----------|---------|-------------|
| 5mm | £349.20 | Code: 02051 |
| Carronite | £633.60 | Code: 02052 |

IMPERIAL TG

| | | |
|-----------|---------|-------------|
| 5mm | £266.40 | Code: 02108 |
| Carronite | £495.60 | Code: 02109 |

MATRIX

| | | |
|-----------|---------|-------------|
| 5mm | £272.40 | Code: 02122 |
| Carronite | £511.20 | Code: 02123 |

PROFILE

| | | |
|-----------|---------|-------------|
| 5mm | £313.20 | Code: 02418 |
| Carronite | £580.80 | Code: 02419 |

QUANTUM INTEGRA

| | | |
|-----------|---------|-------------|
| 5mm | £315.60 | Code: 02165 |
| Carronite | £549.60 | Code: 02166 |

QUANTUM INTEGRA ECO 430

| | | |
|-----------|---------|-------------|
| 5mm | £315.60 | Code: 02447 |
| Carronite | £549.60 | Code: 02448 |

QUANTUM INTEGRA ECO 515

| | | |
|-----------|---------|--------------|
| 5mm | £315.60 | Code: 02447* |
| Carronite | £549.60 | Code: 02448* |

QUANTUM SE

| | | |
|-----------|---------|-------------|
| 5mm | £272.40 | Code: 02141 |
| Carronite | £513.60 | Code: 02142 |

1600 X 700

AXIS

| | | |
|-----------|---------|-------------|
| 5mm | £272.40 | Code: 02033 |
| Carronite | £511.20 | Code: 02034 |

CAMDEN SE

| | | |
|-----------|---------|-------------|
| 5mm | £313.20 | Code: 02555 |
| Carronite | £580.80 | Code: 02556 |

DELTA

| | | |
|-----------|---------|-------------|
| 5mm | £349.20 | Code: 02055 |
| Carronite | £633.60 | Code: 02056 |

IMPERIAL TG

| | | |
|-----------|---------|-------------|
| 5mm | £266.40 | Code: 02110 |
| Carronite | £495.60 | Code: 02111 |

MATRIX

| | | |
|-----------|---------|-------------|
| 5mm | £272.40 | Code: 02124 |
| Carronite | £511.20 | Code: 02125 |

PROFILE

| | | |
|-----------|---------|-------------|
| 5mm | £313.20 | Code: 02420 |
| Carronite | £580.80 | Code: 02421 |

PROFILE DUO

| | | |
|-----------|---------|-------------|
| 5mm | £313.20 | Code: 02199 |
| Carronite | £580.80 | Code: 02200 |

QUANTUM INTEGRA

| | | |
|-----------|---------|-------------|
| 5mm | £315.60 | Code: 02167 |
| Carronite | £549.60 | Code: 02168 |

QUANTUM INTEGRA ECO 430

| | | |
|-----------|---------|-------------|
| 5mm | £315.60 | Code: 02449 |
| Carronite | £549.60 | Code: 02450 |

QUANTUM INTEGRA ECO 515

| | | |
|-----------|---------|--------------|
| 5mm | £315.60 | Code: 02449* |
| Carronite | £549.60 | Code: 02450* |

QUANTUM SE

| | | |
|-----------|---------|-------------|
| 5mm | £272.40 | Code: 02143 |
| Carronite | £513.60 | Code: 02144 |

1600 X 725

STATUS

| | | |
|--------------|---------|-------------|
| LH 5mm | £499.20 | Code: 02209 |
| LH Carronite | £846.00 | Code: 02210 |
| RH 5mm | £499.20 | Code: 02211 |
| RH Carronite | £846.00 | Code: 02212 |

1600 X 750

SIGMA

| | | |
|-----------|---------|-------------|
| 5mm | £465.60 | Code: 02242 |
| Carronite | £748.80 | Code: 02454 |

1600 X 800

QUANTUM SE

| | | |
|-----------|---------|-------------|
| 5mm | £378.00 | Code: 02145 |
| Carronite | £607.20 | Code: 02146 |

1650 X 700

CAMDEN SE

| | | |
|-----------|---------|-------------|
| 5mm | £313.20 | Code: 02557 |
| Carronite | £580.80 | Code: 02558 |

DELTA

| | | |
|-----------|---------|-------------|
| 5mm | £349.20 | Code: 02059 |
| Carronite | £633.60 | Code: 02060 |

QUANTUM INTEGRA

| | | |
|-----------|---------|-------------|
| 5mm | £315.60 | Code: 02523 |
| Carronite | £549.60 | Code: 02524 |

PROFILE DUO

| | | |
|-----------|---------|-------------|
| 5mm | £313.20 | Code: 02521 |
| Carronite | £580.80 | Code: 02522 |

1675 X 700

DELTA

| | | |
|-----------|---------|-------------|
| 5mm | £349.20 | Code: 02063 |
| Carronite | £633.60 | Code: 02064 |

IMPERIAL TG

| | | |
|-----------|---------|-------------|
| 5mm | £266.40 | Code: 02112 |
| Carronite | £495.60 | Code: 02113 |

1700 X 700

ALPHA

| | | |
|-----------|---------|-------------|
| 5mm | £367.20 | Code: 02005 |
| Carronite | £588.00 | Code: 02006 |

ARC SE

| | | |
|-----------|---------|-------------|
| 5mm | £255.60 | Code: 02013 |
| Carronite | £489.60 | Code: 02014 |

AXIS

| | | |
|-----------|---------|-------------|
| 5mm | £272.40 | Code: 02037 |
| Carronite | £511.20 | Code: 02038 |

BRITANNIA

| | | |
|-----------|---------|-------------|
| 5mm | £298.80 | Code: 02043 |
| Carronite | £523.20 | Code: 02044 |

CAMDEN SE

| | | |
|-----------|---------|-------------|
| 5mm | £313.20 | Code: 02559 |
| Carronite | £580.80 | Code: 02560 |

DELTA

| | | |
|-----------|---------|-------------|
| 5mm | £349.20 | Code: 02067 |
| Carronite | £633.60 | Code: 02068 |

IMPERIAL TG

| | | |
|-----------|---------|-------------|
| 5mm | £266.40 | Code: 02114 |
| Carronite | £495.60 | Code: 02115 |

MATRIX

| | | |
|-----------|---------|-------------|
| 5mm | £272.40 | Code: 02126 |
| Carronite | £511.20 | Code: 02127 |

PROFILE

| | | |
|-----------|---------|-------------|
| 5mm | £313.20 | Code: 02422 |
| Carronite | £580.80 | Code: 02423 |

PROFILE DUO

| | | |
|-----------|---------|-------------|
| 5mm | £313.20 | Code: 02191 |
| Carronite | £580.80 | Code: 02192 |

QUANTUM DUO

| | | |
|-----------|---------|-------------|
| 5mm | £272.40 | Code: 02159 |
| Carronite | £513.60 | Code: 02160 |

QUANTUM INTEGRA

| | | |
|-----------|---------|-------------|
| 5mm | £315.60 | Code: 02169 |
| Carronite | £549.60 | Code: 02170 |

QUANTUM INTEGRA ECO 430

| | | |
|-----------|---------|-------------|
| 5mm | £315.60 | Code: 02402 |
| Carronite | £549.60 | Code: 02403 |

QUANTUM INTEGRA ECO 515

| | | |
|-----------|---------|--------------|
| 5mm | £315.60 | Code: 02402* |
| Carronite | £549.60 | Code: 02403* |

QUANTUM SE

| | | |
|-----------|---------|-------------|
| 5mm | £272.40 | Code: 02151 |
| Carronite | £513.60 | Code: 02152 |

SWALLOW TG

| | | |
|-----------|---------|-------------|
| 8mm | £334.80 | Code: 02223 |
| 5mm | £244.80 | Code: 02221 |
| Carronite | £522.00 | Code: 02222 |

1700 X 725

STATUS

| | | |
|--------------|---------|-------------|
| LH 5mm | £499.20 | Code: 02213 |
| LH Carronite | £846.00 | Code: 02214 |
| RH 5mm | £499.20 | Code: 02215 |
| RH Carronite | £846.00 | Code: 02216 |

URBAN

| | | |
|-----------|---------|-------------|
| 5mm | £348.00 | Code: 02263 |
| Carronite | £550.80 | Code: 02264 |

RECTANGULAR BATHS

1700 X 750

ALPHA

| | | |
|-----------|---------|-------------|
| 5mm | £441.60 | Code: 02007 |
| Carronite | £686.40 | Code: 02008 |

ARC DUO

| | | |
|-----------|---------|-------------|
| 5mm | £332.40 | Code: 02017 |
| Carronite | £568.80 | Code: 02018 |

ARC SE

| | | |
|-----------|---------|-------------|
| 5mm | £332.40 | Code: 02015 |
| Carronite | £568.80 | Code: 02016 |

BRITANNIA

| | | |
|-----------|---------|-------------|
| 5mm | £511.20 | Code: 02045 |
| Carronite | £801.60 | Code: 02046 |

ECHELON (INCLUDES FILLER)

| | | |
|-----------|-----------|-------------|
| 5mm | £801.60 | Code: 02079 |
| Carronite | £1,117.20 | Code: 02080 |

EQUATION

| | | |
|-----------|---------|-------------|
| 5mm | £438.00 | Code: 02090 |
| Carronite | £674.40 | Code: 02091 |

EQUITY

| | | |
|-----------|---------|-------------|
| 5mm | £550.80 | Code: 02359 |
| Carronite | £882.00 | Code: 02360 |

HIGHGATE DE

| | | |
|-----------|---------|-------------|
| Carronite | £993.60 | Code: 02536 |
|-----------|---------|-------------|

HIGHGATE SE

| | | |
|-----------|---------|-------------|
| Carronite | £993.60 | Code: 02535 |
|-----------|---------|-------------|

INDEX

| | | |
|-----------|---------|-------------|
| 5mm | £439.20 | Code: 02118 |
| Carronite | £694.80 | Code: 02119 |

PROFILE

| | | |
|-----------|---------|-------------|
| 5mm | £393.60 | Code: 02424 |
| Carronite | £680.40 | Code: 02425 |

PROFILE DUO

| | | |
|-----------|---------|-------------|
| 5mm | £393.60 | Code: 02195 |
| Carronite | £680.40 | Code: 02196 |

QUANTUM DUO

| | | |
|-----------|---------|-------------|
| 5mm | £339.60 | Code: 02157 |
| Carronite | £582.00 | Code: 02158 |

QUANTUM INTEGRA DUO

| | | |
|-----------|---------|-------------|
| 5mm | £388.80 | Code: 02463 |
| Carronite | £628.80 | Code: 02464 |

QUANTUM INTEGRA

| | | |
|-----------|---------|-------------|
| 5mm | £388.80 | Code: 02171 |
| Carronite | £628.80 | Code: 02172 |

QUANTUM SE

| | | |
|-----------|---------|-------------|
| 5mm | £339.60 | Code: 02147 |
| Carronite | £582.00 | Code: 02148 |

QUANTUM SPACESAVER

| | | |
|--------------|---------|-------------|
| LH 5mm | £392.40 | Code: 02179 |
| LH Carronite | £627.60 | Code: 02177 |
| RH 5mm | £392.40 | Code: 02180 |
| RH Carronite | £627.60 | Code: 02178 |

SIGMA

| | | |
|-----|---------|-------------|
| 5mm | £465.60 | Code: 02189 |
| | | |

SHOWERBATHS

1500 X 700-850

QUANTUM

| | | |
|-----------------------|---------|-------------|
| LH 5mm | £435.60 | Code: 02173 |
| LH Carronite | £661.20 | Code: 02174 |
| RH 5mm | £435.60 | Code: 02175 |
| RH Carronite | £661.20 | Code: 02176 |
| Front Panel 5mm | £170.40 | Code: 02324 |
| Front Panel Carronite | £370.80 | Code: 02325 |
| End Panel 5mm | £106.80 | Code: 02312 |
| End Panel Carronite | £145.20 | Code: 02313 |
| Screen QSS-2 | £258.00 | Code: 02347 |

1500 X 750-900

URBAN COMPACT

| | | |
|-----------------------|-----------|-------------|
| LH 5mm | £627.60 | Code: 02365 |
| LH Carronite | £1,045.20 | Code: 02366 |
| RH 5mm | £627.60 | Code: 02367 |
| RH Carronite | £1,045.20 | Code: 02368 |
| L-Shaped Carronite | £492.00 | Code: 02505 |
| Front Panel 5mm | £224.40 | Code: 02373 |
| Front Panel Carronite | £360.00 | Code: 02374 |
| Screen CSS-4 | £242.40 | Code: 02380 |
| Screen wrap round | £742.80 | Code: 02379 |

1500 X 900

PROFILE SB

| | | |
|--------------------|-----------|-------------|
| LH 5mm | £648.00 | Code: 02467 |
| LH Carronite | £1,018.80 | Code: 02469 |
| RH 5mm | £648.00 | Code: 02468 |
| RH Carronite | £1,018.80 | Code: 02470 |
| LH Front Panel 5mm | £246.00 | Code: 02512 |
| RH Front Panel 5mm | £246.00 | Code: 02513 |
| Screen CSS-4 | £242.40 | Code: 02380 |

1550 X 850

STATUS

| | | |
|-----------------|-----------|-------------|
| LH 5mm | £602.40 | Code: 02398 |
| LH Carronite | £1,000.80 | Code: 02399 |
| RH 5mm | £602.40 | Code: 02400 |
| RH Carronite | £1,000.80 | Code: 02401 |
| Panel 5mm | £241.20 | Code: 02404 |
| Panel Carronite | £345.60 | Code: 02405 |
| Screen CFS-1 | £152.40 | Code: 02344 |

1575 X 850

URBAN SWING

| | | |
|-----------------------|-----------|-------------|
| LH Carronite | £1,018.20 | Code: 02432 |
| RH Carronite | £1,018.20 | Code: 02434 |
| L-Panel Carronite | £331.20 | Code: 02441 |
| Front panel Carronite | £165.60 | Code: 02440 |
| Screen QSS-2 | £258.00 | Code: 02347 |

1575 X 700-850

URBAN EDGE

| | | |
|-----------------------|-----------|-------------|
| LH 5mm | £609.60 | Code: 02427 |
| LH Carronite | £1,018.80 | Code: 02428 |
| RH 5mm | £609.60 | Code: 02429 |
| RH Carronite | £1,018.80 | Code: 02430 |
| L-Panel Carronite | £498.00 | Code: 02551 |
| Front panel 5mm | £224.40 | Code: 02437 |
| Front panel Carronite | £360.00 | Code: 02438 |
| Screen QSS-2 | £258.00 | Code: 02347 |

1600 X 700-800

DELTA

| | | |
|-----------------------|---------|-------------|
| LH 5mm | £570.00 | Code: 02071 |
| LH Carronite | £946.80 | Code: 02072 |
| RH 5mm | £570.00 | Code: 02073 |
| RH Carronite | £946.80 | Code: 02074 |
| Front Panel 5mm | £163.20 | Code: 02295 |
| Front Panel Carronite | £333.60 | Code: 02296 |
| End Panel 5mm | £106.80 | Code: 02312 |
| End Panel Carronite | £145.20 | Code: 02313 |
| Screen CSS-1 | £242.40 | Code: 02343 |

1600 X 700-850

QUANTUM

| | | |
|-----------------------|---------|-------------|
| LH 5mm | £435.60 | Code: 02386 |
| LH Carronite | £661.20 | Code: 02387 |
| RH 5mm | £435.60 | Code: 02388 |
| RH Carronite | £661.20 | Code: 02389 |
| Front Panel 5mm | £170.40 | Code: 02390 |
| Front Panel Carronite | £370.80 | Code: 02391 |
| End Panel 5mm | £106.80 | Code: 02312 |
| End Panel Carronite | £145.20 | Code: 02313 |
| Screen QSS-2 | £258.00 | Code: 02347 |

1675 X 700-850

URBAN EDGE

| | | |
|-----------------------|-----------|-------------|
| LH 5mm | £609.60 | Code: 02525 |
| LH Carronite | £1,018.80 | Code: 02526 |
| RH 5mm | £609.60 | Code: 02527 |
| RH Carronite | £1,018.80 | Code: 02528 |
| L-Panel Carronite | £498.00 | Code: 02552 |
| Front panel 5mm | £224.40 | Code: 02529 |
| Front panel Carronite | £360.00 | Code: 02530 |
| Screen QSS-2 | £258.00 | Code: 02347 |

1700 X 700-800

ASPECT

| | | |
|-----------------------|---------|-------------|
| LH 5mm | £586.80 | Code: 02025 |
| LH Carronite | £975.60 | Code: 02026 |
| RH 5mm | £586.80 | Code: 02027 |
| RH Carronite | £975.60 | Code: 02028 |
| Front panel 5mm | £163.20 | Code: 02250 |
| Front panel Carronite | £333.60 | Code: 02251 |
| End Panel 5mm | £106.80 | Code: 02258 |
| End Panel Carronite | £145.20 | Code: 02259 |
| Screen CSS-1 | £242.40 | Code: 02343 |

DELTA

| | | |
|-----------------------|---------|-------------|
| LH 5mm | £570.00 | Code: 02075 |
| LH Carronite | £946.80 | Code: 02076 |
| RH 5mm | £570.00 | Code: 02077 |
| RH Carronite | £946.80 | Code: 02078 |
| Front panel 5mm | £163.20 | Code: 02297 |
| Front panel Carronite | £333.60 | Code: 02298 |
| End Panel 5mm | £106.80 | Code: 02312 |
| End Panel Carronite | £145.20 | Code: 02313 |
| Screen CSS-1 | £242.40 | Code: 02343 |

1700 X 700-850

ARC

| | | |
|-----------------------|---------|-------------|
| LH 5mm | £475.20 | Code: 02183 |
| LH Carronite | £762.00 | Code: 02184 |
| RH 5mm | £475.20 | Code: 02185 |
| RH Carronite | £762.00 | Code: 02186 |
| Front panel 5mm | £141.60 | Code: 02332 |
| Front panel Carronite | £297.60 | Code: 02333 |
| End Panel 5mm | £106.80 | Code: 02312 |
| End Panel Carronite | £145.20 | Code: 02313 |
| Screen CSS-2 | £224.40 | Code: 02350 |

QUANTUM

| | | |
|-----------------------|---------|-------------|
| LH 5mm | £435.60 | Code: 02205 |
| LH Carronite | £661.20 | Code: 02206 |
| RH 5mm | £435.60 | Code: 02207 |
| RH Carronite | £661.20 | Code: 02208 |
| Front Panel 5mm | £170.40 | Code: 02326 |
| Front Panel Carronite | £370.80 | Code: 02327 |
| End Panel 5mm | £106.80 | Code: 02312 |
| End Panel Carronite | £145.20 | Code: 02313 |
| Screen QSS-2 | £258.00 | Code: 02347 |

1700 X 900

HIGHGATE

| | | |
|--------------|-----------|-------------|
| LH Carronite | £1,234.80 | Code: 02538 |
| RH Carronite | £1,234.80 | Code: 02539 |
| LH Screen | £312.00 | Code: 02581 |
| RH Screen | £312.00 | Code: 02582 |
| L-Panel | £499.20 | Code: 02540 |

1700 X 750-900

URBAN

| | | |
|-----------------------|-----------|-------------|
| LH 5mm | £627.60 | Code: 02369 |
| LH Carronite | £1,045.20 | Code: 02370 |
| RH 5mm | £627.60 | Code: 02371 |
| RH Carronite | £1,045.20 | Code: 02372 |
| L-Shaped Carronite | £492.00 | Code: 02506 |
| Front Panel 5mm | £224.40 | Code: 02375 |
| Front Panel Carronite | £360.00 | Code: 02376 |
| Screen CSS-4 | £242.40 | Code: 02380 |
| Screen wrap round | £742.80 | Code: 02379 |

SIGMA

| | | |
|-----------------------|-----------|-------------|
| LH 5mm | £919.20 | Code: 02471 |
| LH Carronite | £1,392.00 | Code: 02473 |
| RH 5mm | £919.20 | Code: 02472 |
| RH Carronite | £1,392.00 | Code: 02474 |
| Front panel 5mm | £184.80 | Code: 02514 |
| Front panel Carronite | £333.60 | Code: 02515 |
| End Panel 5mm | £106.80 | Code: 02385 |
| End Panel Carronite | £145.20 | Code: 02383 |
| Screen CSS-2 | £238.80 | Code: 02350 |

FREESTANDING BATHS

1550 X 850

PARADIGM

| | | |
|----------------------|-----------|--------------|
| (inc waste/overflow) | £1,903.20 | Code: 02132 |
| (with filler) | £2,085.60 | Code: 02132+ |

1700 X 750

ASCOLI

| | | |
|------------------|-----------|-------------|
| 5mm | £1,360.80 | Code: 02024 |
| CHROME FEET | £418.80 | Code: 02022 |
| 5mm Inset option | £558.00 | Code: 02416 |
| Carronite | | |
| Inset option | £990.00 | Code: 02417 |

1750 X 800

HALCYON OVAL

| | | |
|--------------------------------|-----------|--------------|
| WHITE (includes overflow only) | £1,903.20 | Code: 02102 |
| WHITE (includes filler) | £2,085.60 | Code: 02102+ |
| BLACK (includes overflow only) | £1,903.20 | Code: 02104 |
| BLACK (includes filler) | £2,085.60 | Code: 02104+ |
| RED (includes overflow only) | £1,903.20 | Code: 02103 |
| RED (includes filler) | £2,085.60 | Code: 02103+ |
| 5mm Inset option | £558.00 | Code: 02100 |
| Carronite | | |
| Inset option | £990.00 | Code: 02101 |

HALCYON SQUARE

| | | |
|--------------------------------|-----------|--------------|
| WHITE (includes overflow only) | £1,903.20 | Code: 02105 |
| WHITE (includes filler) | £2,085.60 | Code: 02105+ |
| BLACK (includes overflow only) | £1,903.20 | Code: 02561 |
| BLACK (includes filler) | £2,085.60 | Code: 02561+ |
| RED (includes overflow only) | £1,903.20 | Code: 02562 |
| RED (includes filler) | £2,085.60 | Code: 02562+ |
| 5mm Inset option | £558.00 | Code: 02100 |
| Carronite | | |
| Inset option | £990.00 | Code: 02101 |

CELSIUS RANGE

CELSIUS 700

| | | |
|--------------|---------|-------------|
| LH Carronite | £841.20 | Code: 02406 |
| RH Carronite | £841.20 | Code: 02407 |

CELSIUS 750

| | | |
|--------------|---------|-------------|
| LH Carronite | £993.60 | Code: 02408 |
| RH Carronite | £993.60 | Code: 02409 |

CELSIUS 1800

| | | |
|-----------|-----------|-------------|
| Carronite | £1,305.60 | Code: 02410 |
|-----------|-----------|-------------|

CELSIUS SHOWERBATH

| | | |
|--------------|-----------|-------------|
| LH Carronite | £1,234.80 | Code: 02412 |
| RH Carronite | £1,234.80 | Code: 02413 |

CELSIUS OVAL

| | | |
|-----------|-----------|-------------|
| Carronite | £1,632.00 | Code: 02494 |
|-----------|-----------|-------------|

CELSIUS DUO

| | | |
|-----------|-----------|-------------|
| Carronite | £3,373.20 | Code: 02411 |
|-----------|-----------|-------------|

HALCYON 'D'

| | | |
|---|---------|-------------|
| 5mm | £558.00 | Code: 02487 |
| Carronite | £990.00 | Code: 02488 |
| One-Piece Panel Carronite (WHITE) | | |
| | £524.40 | Code: 02436 |
| One-Piece Panel Carronite (GRANITE / COLOUR MATCH)* | £627.60 | Code: 02453 |

HIGHGATE

| | | |
|--------------------------------------|-----------|-------------|
| Freestanding - White | | |
| | £2,314.80 | Code: 02541 |
| Freestanding - Colour (Centre Panel) | | |
| | £3,507.60 | Code: 02542 |

1800 X 900

ELYSEE

| | | |
|------------------|-----------|-------------|
| Carronite | £1,903.20 | Code: 02086 |
| 5mm Inset option | £580.80 | Code: 02084 |
| Carronite | | |
| Inset option | £1,030.80 | Code: 02085 |
| Optional Filler | £182.40 | |

1910 X 910

CELSIUS

| | | |
|---|-----------|-------------|
| WHITE (includes overflow/filler/clicker waste)* | | |
| | £2,314.80 | Code: 02492 |
| GRANITE (includes overflow/filler/clicker waste)* | | |
| | £3,507.60 | Code: 02493 |

CORNER BATHS

1550 X 950

DOVE

| | | |
|--------------|-----------|-------------|
| LH 5mm | £706.80 | Code: 02232 |
| LH Carronite | £1,000.80 | Code: 02233 |
| RH 5mm | £706.80 | Code: 02234 |
| RH Carronite | £1,000.80 | Code: 02235 |

1700 X 1000

OMEGA

| | | |
|--------------|-----------|-------------|
| LH 5mm | £921.60 | Code: 02238 |
| LH Carronite | £1,520.40 | Code: 02239 |
| RH 5mm | £921.60 | Code: 02240 |
| RH Carronite | £1,520.40 | Code: 02241 |

1200 X 1200

ORIOLE

| | | |
|-----------|---------|-------------|
| 5mm | £752.40 | Code: 02242 |
| Carronite | £957.60 | Code: 02243 |

1300 X 1300

MONARCH

| | | |
|-----------|-----------|-------------|
| 5mm | £805.20 | Code: 02236 |
| Carronite | £1,017.60 | Code: 02237 |

TRANQUILITY

| | | |
|-----------|-----------|-------------|
| 5mm | £870.00 | Code: 02244 |
| Carronite | £1,372.80 | Code: 02245 |

1500 X 1500

CENTENNIAL

| | | |
|-----------|-----------|-------------|
| 5mm | £1,044.00 | Code: 02230 |
| Carronite | £1,533.60 | Code: 02231 |

1200 X 1575

CLIPPER ^{NEW}

| | | |
|--------------|-----------|-------------|
| LH 5mm | £706.80 | Code: 02476 |
| LH Carronite | £1,000.80 | Code: 02475 |
| RH 5mm | £706.80 | Code: 02478 |
| RH Carronite | £1,000.80 | |

PANELS, SCREENS & ACCESSORIES

"L" SHAPED PANELS

| LENGTH x WIDTH | HEIGHT | STD £ | CODE | CARRONITE £ | CODE |
|----------------|--------|-------|------|-------------|-------|
| 1500 X 700 | 430 | - | - | £327.60 | 02499 |
| 1500 X 700 | 515 | - | - | £327.60 | 02502 |
| 1600 X 700 | 430 | - | - | £327.60 | 02500 |
| 1600 X 700 | 515 | - | - | £327.60 | 02503 |
| 1600 X 800 | 540 | - | - | £327.60 | 02567 |
| 1650 X 700 | 515 | - | - | £327.60 | 02531 |
| 1675 X 700 | 515 | - | - | £327.60 | 02568 |
| 1700 X 700 | 430 | - | - | £327.60 | 02501 |
| 1700 X 700 | 515 | - | - | £327.60 | 02299 |
| 1700 X 700 | 540 | - | - | £327.60 | 02569 |
| 1700 X 725 | 540 | - | - | £327.60 | 02570 |
| 1700 X 750 | 540 | - | - | £327.60 | 02300 |
| 1700 X 800 | 540 | - | - | £327.60 | 02489 |
| 1800 X 800 | 540 | - | - | £327.60 | 02301 |

QUANTUM FRONT PANELS

| LENGTH x WIDTH | HEIGHT | STD £ | CODE | CARRONITE £ | CODE |
|----------------|--------|---------|-------|-------------|-------|
| 1400 | 515 | £115.20 | 02280 | £165.60 | 02266 |
| 1500 | 430 | £115.20 | 02252 | £165.60 | 02253 |
| 1500 | 515 | £115.20 | 02315 | £165.60 | 02314 |
| 1600 | 430 | £115.20 | 02254 | £165.60 | 02255 |
| 1600 | 515 | £115.20 | 02316 | £165.60 | 02317 |
| 1600 | 540 | £128.40 | 02281 | £165.60 | 02267 |
| 1650 | 515 | £115.20 | 02282 | £165.60 | 02268 |
| 1675 | 515 | £115.20 | 02283 | £165.60 | 02269 |
| 1700 | 430 | £115.20 | 02256 | £165.60 | 02257 |
| 1700 | 515 | £115.20 | 02320 | £165.60 | 02321 |
| 1700 | 540 | £128.40 | 02318 | £165.60 | 02319 |
| 1800 | 540 | £136.80 | 02322 | £180.00 | 02323 |
| 1900 | 570 | £136.80 | 02284 | £180.00 | 02270 |

END PANELS

| | HEIGHT | STD £ | CODE | CARRONITE £ | CODE |
|-----|--------|---------|-------|-------------|-------|
| 700 | 430 | £91.20 | 02258 | £120.00 | 02259 |
| 700 | 515 | £91.20 | 02285 | £120.00 | 02271 |
| 750 | 515 | £91.20 | 02288 | £120.00 | 02274 |
| 700 | 540 | £91.20 | 02286 | £120.00 | 02272 |
| 725 | 540 | £91.20 | 02287 | £120.00 | 02307 |
| 750 | 540 | £91.20 | 02289 | £120.00 | 02275 |
| 800 | 540 | £91.20 | 02291 | £120.00 | 02277 |
| 900 | 540 | £100.80 | 02293 | £133.20 | 02278 |
| 900 | 570 | £100.80 | 02294 | £133.20 | 02279 |

HIGHGATE PANELS & SCREENS

| | STD £ | CODE | CARRONITE £ | CODE |
|--|---------|------|-------------|-------|
| HIGHGATE SHOWERBATH L-PANEL | £499.20 | | £499.20 | 02540 |
| HIGHGATE 1700X540 FRONT PANEL | £199.20 | | £199.20 | 02543 |
| HIGHGATE 1800X540 FRONT PANEL | £214.80 | | £214.80 | 02544 |
| HIGHGATE 1700X540X750 L-PANEL | £337.20 | | £337.20 | 02545 |
| HIGHGATE 1800X540X800 L-PANEL | £337.20 | | £337.20 | 02546 |
| HIGHGATE GRIPS (SINGLE) | £50.40 | | £50.40 | 02548 |
| HIGHGATE SHOWERBATH SCREEN, HGSBL-1 (LH) | £312.00 | | £312.00 | 02581 |
| HIGHGATE SHOWERBATH SCREEN, HGSBR-1 (RH) | £312.00 | | £312.00 | 02582 |
| HIGHGATE STRAIGHT SCREEN (WITH ETCHING) | £259.20 | | £259.20 | 02549 |

ALL PRICES ARE INCLUSIVE OF VAT (20%).

PANELS, SCREENS & ACCESSORIES

SCREENS

| SCREEN RANGE | HEIGHT | RRP | CODE |
|-------------------------|--------|---------|--------|
| CFS-1 | 1400MM | £152.40 | 02344 |
| CFS-2 | 1500MM | £168.48 | 02346 |
| QSS-1 (FIXED L-PROFILE) | 1400MM | £258.00 | 02347+ |
| QSS-2 | 1400MM | £258.00 | 02347 |
| CSS-1 | 1400MM | £242.40 | 02343 |
| CSS-2 | 1400MM | £224.40 | 02350 |
| CSS-4 | 1400MM | £242.40 | 02380 |

HEADRESTS

| HEADRESTS | COMPATIBLE | RRP |
|-----------|--|---------|
| HR600 | HAIKU, LINEA | £127.20 |
| HR700 | HAIKU | £127.20 |
| HR800 | ALPHA/ASPECT/AXIS/DELTA/ IMPERIAL/INDEX/SIGMA | £127.20 |
| HR900 | AGENDA/HALCYON SQUARE/ QUANTUM/CELSIUS 700 | £127.20 |

ALL PRICES ARE INCLUSIVE OF VAT (20%).



Get in touch

To find out more about Carron Bathrooms
or to order a trade pack **call 01324 638407**
or email **info@carronbathrooms.com**

View the entire Carron range at
carronbathrooms.com/bath-finder

Address.

Carron Bathrooms
North Carron Works
Stenhouse Rd
Falkirk FK2 8UW
Scotland
United Kingdom

Tel.

+44 (0)1324 638 407

Fax.

+44 (0)1324 611 490

Email.

info@carronbathrooms.com

Follow.

facebook/carronbathrooms

VAT NO. 751 5997 92. COMPANY REG NO. 80506.

Please note: All dimensions shown in this document are nominal and approximate. Full technical drawings are available from your retailer or www.carronbathrooms.com Carron Bathrooms' policy is one of continuous product improvement. We therefore reserve the right to change specifications, designs and costings without notice. All contents of this brochure © Carron Bathrooms Limited. December 2018 - E & OE. For the full range of Carron products please visit our website. Design: Sevenfivecreative.com

carronbathrooms.com

